

Go to www.vtechphones.com to register your product for enhanced warranty support and latest VTech product news.

LS6002
LS6002-13
LS6002-15
LS6002-16
LS6002-17

DECT 6.0 accessory handset for use with VTech model LS6181



vtech®

User's manual

Congratulations

on purchasing your new VTech product. Before using this telephone, please read **Important safety instructions**.

This manual has instructions on how to set up and register your new handset. For instructions on using the handset, see the Abridged user's manual that came with your telephone base.

You may also view or download the online user's manual for a full set of installation and operation instructions at www.vtechphones.com. In Canada, visit www.vtechcanada.com.



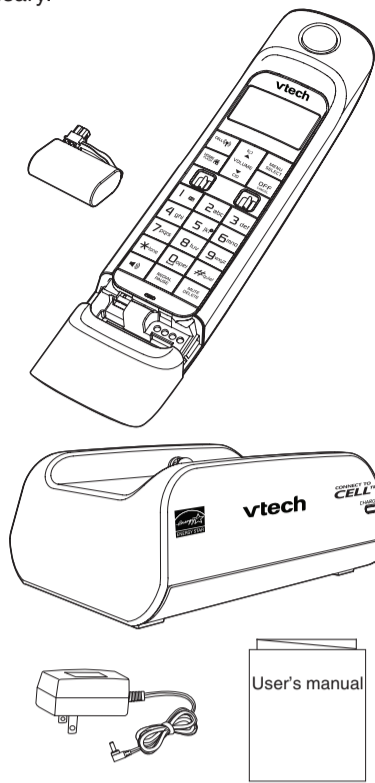
Telephones identified with this logo have reduced noise and interference when used with most T-coil equipped hearing aids and cochlear implants. The TIA-1083 Compliant Logo is a trademark of the Telecommunications Industry Association. Used under license.



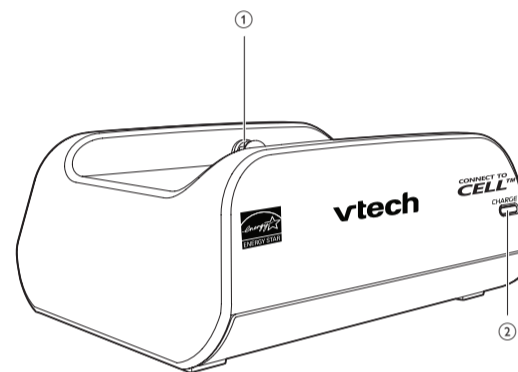
The ENERGY STAR® program (www.energystar.gov) recognizes and encourages the use of products that save energy and help protect our environment. We are proud to mark this product with the ENERGY STAR® label indicating it meets the latest energy efficiency guidelines.

Parts checklist

Your telephone package contains the following items. Save your sales receipt and original packaging in the event warranty service is necessary.

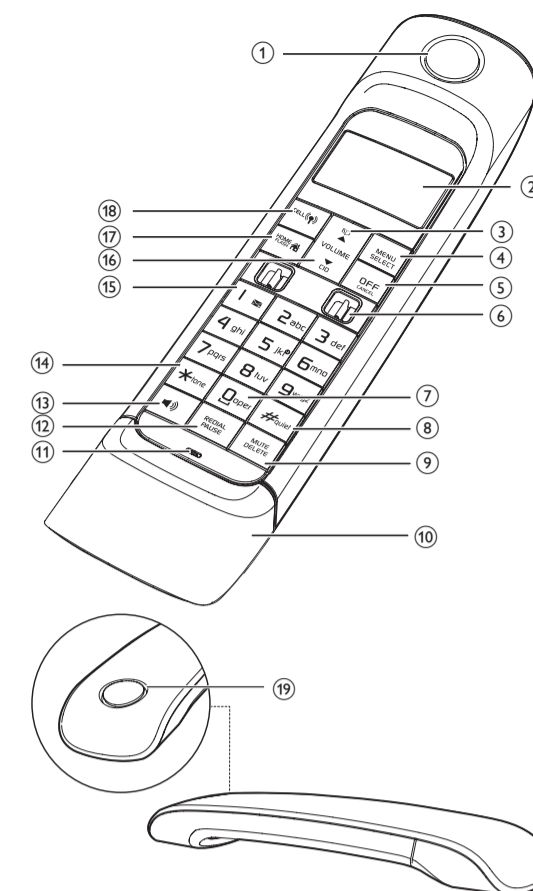


Charger overview



- 1 – Charging pole
- 2 – CHARGE light

Handset overview



- 1 – Handset earpiece

- 2 – LCD display

- 3 – /VOLUME

- Review the directory when the phone is not in use.
- Scroll up while in a menu, or in the directory, caller ID log or redial list.
- Move the cursor to the right when entering numbers or names.
- Increase the listening volume during a call or message playback.

- 4 – MENU/SELECT

- Show the menu.
- While in a menu, press to select an item or save an entry or setting.

- 5 – OFF/CANCEL

- Hang up a call.
- Return to the previous menu or idle mode without making changes.
- Delete digits while predialing.

- Silence the handset ringer temporarily while the phone is ringing.
- Erase the missed call indicator while the handset is not in use.

- 6 – Charging pole

- 7 – /OPER

- Enter space character during text editing.

- 8 – /QUIET

- Show other dialing options when reviewing a caller ID log entry.
- Set and turn on the quiet mode, or turn it off.

- 9 – MUTE/DELETE

- Mute the microphone during a call.
- Silence the handset ringer temporarily while the phone is ringing.
- Delete the displayed entry while reviewing the directory, caller ID log or redial list.
- Delete digits while predialing.

- 10 – Battery compartment cover

- 11 – Microphone

- 12 – REDIAL/PAUSE
- Review the redial list.
- Insert a dialing pause.

- 13 –

- Make a home call using the handset speakerphone.
- Answer a call using the handset speakerphone.
- Switch between the speakerphone and the handset earpiece.

- 14 –

- Switch to tone dialing temporarily during a call.

- 15 –

- Press repeatedly to add or remove 1 in front of the caller ID log entry before dialing or saving it to the directory.
- Set or dial your voicemail number.

- 16 – CID/▼/VOLUME

- Review the caller ID log when the phone is not in use.
- Scroll down while in a menu, or in the directory, caller ID log or redial list.
- Move the cursor to the left when entering numbers or names.
- Decrease the listening volume during a call or message playback.

- 17 –

- Make or answer a home call.
- Answer an incoming home call when you hear a call waiting alert.

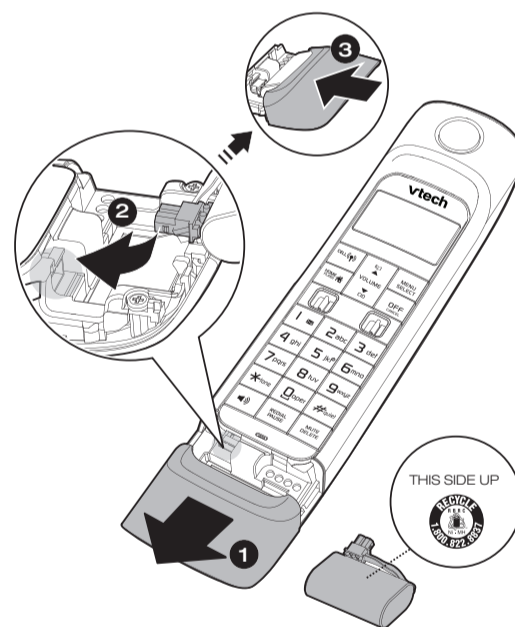
- 18 –

- Make or answer a cell call.
- Answer an incoming cell call when you hear a call waiting alert.

- 19 – Handset speakerphone

Display icons overview

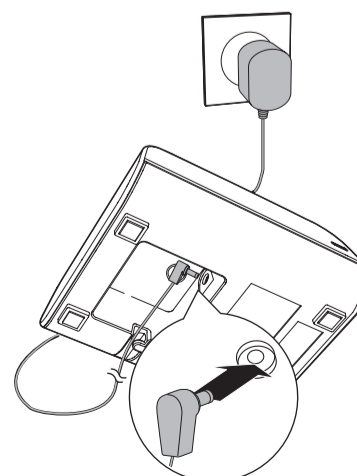
	The battery icon flashes when the battery is low and needs charging.
	The battery icon animates when the battery is charging.
	The battery icon becomes solid when the battery is fully charged.
ECO	The ECO mode activates automatically to reduce power consumption when the handset is within range from the telephone base.
	There are new voicemail received from your telephone service provider.
	<ul style="list-style-type: none"> • On when the home line is in use or there is an incoming home call. • Flashes when there is an incoming home waiting call.
	There are Bluetooth devices connected on the cell devices list.
	<ul style="list-style-type: none"> • On when the cell line is in use or there is an incoming cell call. • Flashes when there is an incoming cell waiting call.
NEW	There are new caller ID log entries.
ANS ON	The answering system is turned on.
	The handset ringer is off.
	The message number currently playing and total number of new/old messages recorded.



Connect and charge the battery

- note**
- Use only the adaptor provided.
 - Charge the battery provided with or identified for use with this product only in accordance with the instructions and limitations specified in this manual.

Connect the charger

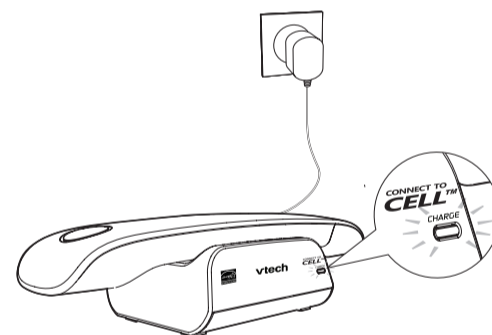


Install the battery

Install the battery as shown.

- note**
- Use only the supplied battery.
 - If the handset will not be used for a long time, disconnect and remove the battery to prevent possible leakage.
 - To purchase a replacement battery, visit our website at www.vtechphones.com or call 1 (800) 595-9511. In Canada, go to www.vtechcanada.com or call 1 (800) 267-7377.

Charge the battery



Once you have installed the battery, the handset LCD display indicates the battery status (see the table below).

- note**
- For best performance, keep the handset in the telephone base or charger when not in use.
 - The battery is fully charged after 11 hours of continuous charging.

Battery indicators	Battery status	Action
The screen is blank, or displays Put in charger and flashes.	The battery has no or very little charge. The handset cannot be used.	Charge without interruption (at least 30 minutes).
The screen displays Low battery and flashes.	The battery has enough charge to be used for a short time.	Charge without interruption (about 30 minutes).
The screen displays HANDSET X .	The battery is charged.	To keep the battery charged, place it in the telephone base or charger when not in use.

Before use

Add and register a handset

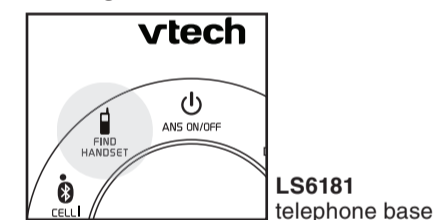
You can add new **LS6002** handsets (purchased separately) to your **LS6181** telephone system. Your **LS6181** telephone system supports a maximum of five handsets.

Register each handset with the **LS6181** telephone base before use. After charged, each expansion handset alternately displays **To register HS...** and **...see manual**.

- note**
- Charge the new handset without interruption for at least 30 minutes before registering it to the telephone base.

To register a handset:

1. Press and hold /FIND HANDSET at the telephone base for about four seconds until the **IN USE** light turns on.



2. Press /QUIET on the cordless handset. Then it shows **Registering...**

The cordless handset show **Registered** and you hear a beep when the registration process completes. The registration process takes about 60 seconds to complete.

Deregister handsets

To replace a handset or reassign the designated handset number of a registered handset, you must deregister all handsets, and then register each handset individually.

To deregister all handsets:

1. Press and hold /FIND HANDSET at the telephone base for about 10 seconds until the **IN USE** light flashes.
2. Immediately press /FIND HANDSET again. You hear a confirmation tone.

All handsets alternately show **To register HS...** and **...see manual** when the deregistration process completes. The deregistration process takes about 10 seconds to complete.

Operating range

This cordless telephone operates with the maximum power allowed by the Federal Communications Commission (FCC). Even so, this handset and telephone base can communicate over only a certain distance - which can vary with the locations of the telephone base and handset, the weather, and the layout of your home or office.

When the handset is out of range, the handset displays **Out of range** or **no pwr at base**.

If there is a call while the handset is out of range, it may not ring. Even if it rings, the call may not connect well when you press /HOME or /CELL. Move closer to the telephone base, then press /HOME or /CELL to answer the call.

If the handset moves out of range during a telephone conversation, there may be interference. To improve reception, move closer to the telephone base.

ECO mode

This power conserving technology reduces power consumption for optimal battery performance. The ECO mode activates automatically whenever the handset is synchronized with the telephone base.

General product care

Taking care of your telephone

Your cordless telephone contains sophisticated electronic parts, so it must be treated with care.

Avoid rough treatment

Place the handset down gently. Save the original packing materials to protect your telephone if you ever need to ship it.

Avoid water

Your telephone can be damaged if it gets wet. Do not use the handset outdoors in the rain, or handle it with wet hands. Do not install the telephone base near a sink, bathtub or shower.

Electrical storms

Electrical storms can sometimes cause power surges harmful to electronic equipment. For your own safety, take caution when using electrical appliances during storms.

Cleaning your telephone

Your telephone has a durable plastic casing that should retain its luster for many years. Clean it only with a dry non-abrasive cloth. Do not use dampened cloth or cleaning solvents of any kind.

Important safety instructions

When using your telephone equipment, basic safety precautions should always be followed to reduce the risk of fire, electric shock and injury, including the following:

1. Read and understand all instructions.
 2. Follow all warnings and instructions marked on the product.
 3. Unplug this product from the wall outlet before cleaning. Do not use liquid or aerosol cleaners. Use a damp cloth for cleaning.
 4. Do not use this product near water such as near a bath tub, wash bowl, kitchen sink, laundry tub or a swimming pool, or in a wet basement or shower.
 5. Do not place this product on an unstable table, shelf, stand or other unstable surfaces.
 6. Slots and openings in the back or bottom of the telephone base and handset are provided for ventilation. To protect them from overheating, these openings must not be blocked by placing the product on a soft surface such as a bed,
7. This product should be operated only from the type of power source indicated on the marking label. If you are not sure of the type of power supply in your home or office, consult your dealer or local power company.
 8. Do not allow anything to rest on the power cord. Do not install this product where the cord may be walked on.
 9. Never push objects of any kind into this product through the slots in the telephone base or handset because they may touch dangerous voltage points or create a short circuit. Never spill liquid of any kind on the product.
 10. To reduce the risk of electric shock, do not disassemble this product, but take it to an authorized service facility. Opening or removing parts of the telephone base or handset other than specified access doors may expose you to dangerous voltages or other risks. Incorrect reassembling can cause electric shock when the product is subsequently used.
 11. Do not overload wall outlets and extension cords.
 12. Unplug this product from the wall outlet and refer servicing to an authorized service facility under the following conditions:
 - When the power supply cord or plug is damaged or frayed.
 - If liquid has been spilled onto the product.
 - If the product has been exposed to rain or water.
 - If the product does not operate normally by following the operating instructions. Adjust only those controls that are covered by the operation instructions. Improper adjustment of other controls may result in damage and often requires extensive work by an authorized technician to restore the product to normal operation.
 13. Avoid using a telephone (other than cordless) during an electrical storm. There is a remote risk of electric shock from lightning.
 14. Do not use the telephone to report a gas leak in the vicinity of the leak. Under certain circumstances, a spark may be created when the adapter is plugged into the power outlet, or when the handset is replaced in its cradle. This is a common event associated with the closing of any electrical circuit. The user should not plug the phone into a power outlet, and should not put a charged handset into the cradle, if the phone is located in an environment containing concentrations of flammable or flame-supporting gases, unless there is adequate ventilation. A spark in such

an environment could create a fire or explosion. Such environments might include: medical use of oxygen without adequate ventilation; industrial gases (cleaning solvents; gasoline vapors; etc.); a leak of natural gas; etc.

15. Only put the handset of your telephone next to your ear when it is in normal talk mode.

16. The power adapter is intended to be correctly oriented in a vertical or floor mount position. The prongs are not designed to hold the plug in place if it is plugged into a ceiling, under-the-table or cabinet outlet.

SAVE THESE INSTRUCTIONS

Battery

- CAUTION:** Use Only Supplied Battery.
- Do not dispose of the battery in a fire. Check with local waste management codes for special disposal instructions.
- Do not open or mutilate the battery. Released electrolyte is corrosive and may cause burns or injury to the eyes or skin. The electrolyte may be toxic if swallowed.
- Exercise care in handling batteries in order not to create a short circuit with conductive materials.
- Charge the battery provided with this product only in accordance with the instructions and limitations specified in this manual.

Precautions for users of implanted cardiac pacemakers

Cardiac pacemakers (applies only to digital cordless telephones):

Wireless Technology Research, LLC (WTR), an independent research entity, led a multidisciplinary evaluation of the interference between portable wireless telephones and implanted cardiac pacemakers. Supported by the U.S. Food and Drug Administration, WTR recommends to physicians that:

Pacemaker patients

- Should keep wireless telephones at least six inches from the pacemaker.
- Should NOT place wireless telephones directly over the pacemaker, such as in a breast pocket, when it is turned ON.
- Should use the wireless telephone at the ear opposite the pacemaker.

WTR’s evaluation did not identify any risk to bystanders with pacemakers from other persons using wireless telephones.

About cordless telephones

- Privacy:** The same features that make a cordless telephone convenient create some limitations. Telephone calls are transmitted between the telephone base and the cordless handset by radio waves, so there is a possibility that the cordless telephone conversations could be intercepted by radio receiving equipment within range of the cordless

handset. For this reason, you should not think of cordless telephone conversations as being as private as those on corded telephones.

- Electrical power:** The telephone base of this cordless telephone must be connected to a working electrical outlet. The electrical outlet should not be controlled by a wall switch. Calls cannot be made from the cordless handset if the telephone base is unplugged, switched off or if the electrical power is interrupted.
- Potential TV interference:** Some cordless telephones operate at frequencies that may cause interference to televisions and VCRs. To minimize or prevent such interference, do not place the telephone base of the cordless telephone near or on top of a TV or VCR. If interference is experienced, moving the cordless telephone farther away from the TV or VCR often reduces or eliminates the interference.
- Rechargeable batteries:** Exercise care in handling batteries in order not to create a short circuit with conducting material such as rings, bracelets and keys. The battery or conductor may overheat and cause harm. Observe proper polarity between the battery and the battery charger.
- Nickel-metal hydride rechargeable batteries:** Dispose of these batteries in a safe manner. Do not burn or puncture the battery. Like other batteries of this type, if burned or punctured, they could release caustic material which could cause injury.

The RBRC® seal

The RBRC® seal on the nickel-metal hydride battery indicates that VTech Communications, Inc. is voluntarily participating in an industry program to collect and recycle these batteries at the end of their useful lives, when taken out of service within the United States and Canada.

The RBRC® program provides a convenient alternative to placing used nickel-metal hydride batteries into the trash or municipal waste, which may be illegal in your area.

VTech’s participation in RBRC® makes it easy for you to drop off the spent battery at local retailers participating in the RBRC® program or at authorized VTech product service centers. Please call **1 (800) 8 BATTERY™** for information on Ni-MH battery recycling and disposal bans/restrictions in your area. VTech’s involvement in this program is part of its commitment to protecting our environment and conserving natural resources.

RBRC® is a registered trademark of Rechargeable Battery Recycling Corporation.



RBRC logo

RBRC logo

RBRC logo

RBRC logo

RBRC logo

RBRC logo

RBRC logo

RBRC logo

RBRC logo

RBRC logo

RBRC logo

RBRC logo

RBRC logo

RBRC logo

RBRC logo

RBRC logo

RBRC logo

RBRC logo

RBRC logo

RBRC logo

RBRC logo

RBRC logo

RBRC logo

RBRC logo

RBRC logo

RBRC logo

RBRC logo

RBRC logo

RBRC logo

RBRC logo

RBRC logo

RBRC logo

RBRC logo

RBRC logo

RBRC logo

RBRC logo

RBRC logo

RBRC logo

RBRC logo

RBRC logo

RBRC logo

RBRC logo

RBRC logo

RBRC logo

RBRC logo

RBRC logo

RBRC logo

RBRC logo

RBRC logo

RBRC logo

RBRC logo

RBRC logo

RBRC logo

RBRC logo

RBRC logo

RBRC logo

RBRC logo

RBRC logo

RBRC logo

RBRC logo

RBRC logo

RBRC logo

RBRC logo

RBRC logo

FCC, ACTA and IC regulations

FCC Part 15

This equipment has been tested and found to comply with the requirements for a Class B digital device under Part 15 of the Federal Communications Commission (FCC) rules. These requirements are intended to provide reasonable protection against harmful interference in a residential installation. This equipment generates, uses and can radiate radio frequency energy and, if not installed and used in accordance with the instructions, may cause harmful interference to radio communications. However, there is no guarantee that interference will not occur in a particular installation. If this equipment does cause harmful interference to radio or television reception, which can be determined by turning the equipment off and on, the user is encouraged to try to correct the interference by one or more of the following measures:

- Reorient or relocate the receiving antenna.
- Increase the separation between the equipment and receiver.
- Connect the equipment into an outlet on a circuit different from that to which the receiver is connected.
- Consult the dealer or an experienced radio/TV technician for help.

Changes or modifications to this equipment not expressly approved by the party responsible for compliance could void the user’s authority to operate the equipment.

This device complies with Part 15 of the FCC rules. Operation is subject to the following two conditions: (1) this device may not cause harmful interference, and (2) this device must accept any interference received, including interference that may cause undesired operation. Privacy of communications may not be ensured when using this telephone.

To ensure safety of users, the FCC has established criteria for the amount of radio frequency energy that can be safely absorbed by a user or bystander according to the intended usage of the product. This product has been tested and found to comply with the FCC criteria. The handset may be safely held against the ear of the user. The telephone base shall be installed and used such that parts of the user’s body other than the hands are maintained at a distance of approximately 20 cm (8 inches) or more. This Class B digital apparatus complies with Canadian equipment request: CAN ICES-3 (B)/NMB-3(B).

FCC Part 68 and ACTA

This equipment complies with Part 68 of the FCC rules and with technical requirements adopted by the Administrative Council for Terminal Attachments (ACTA). The label on the back or bottom of this equipment contains, among other things, a product identifier in the format US:AAEQ##TXXXX. This identifier must be provided to your telephone service provider upon request.

The plug and jack used to connect this equipment to premises wiring and the telephone network must

comply with applicable Part 68 rules and technical requirements adopted by ACTA. A compliant telephone cord and modular plug is provided with this product. It is designed to be connected to a compatible modular jack that is also compliant. An RJ11 jack should normally be used for connecting to a single line and an RJ14 jack for two lines. See the installation instructions in the user’s manual. The Ringer Equivalence Number (REN) is used to determine how many devices you may connect to your telephone line and still have them ring when you are called. The REN for this product is encoded as the 6th and 7th characters following the US: in the product identifier (e.g., if ## is 03, the REN is 0.3). In most, but not all areas, the sum of all RENs should be five (5.0) or less. For more information, please contact your telephone service provider. This equipment may not be used with Party Lines. If you have specially wired alarm dialing equipment connected to your telephone line, ensure the connection of this equipment does not disable your alarm equipment. If you have questions about what will disable alarm equipment, consult your telephone service provider or a qualified installer.

If this equipment is malfunctioning, it must be unplugged from the modular jack until the problem has been corrected. Repairs to this telephone equipment can only be made by the manufacturer or its authorized agents. For repair procedures, follow the instructions outlined under the Limited warranty. If this equipment is causing harm to the telephone network, the telephone service provider may temporarily discontinue your telephone service.

The telephone service provider is required to notify you before interrupting service. If advance notice is not practical, you will be notified as soon as possible. You will be given the opportunity to correct the problem and the telephone service provider is required to inform you of your right to file a complaint with the FCC. Your telephone service provider may make changes in its facilities, equipment, operation, or procedures that could affect the proper functioning of this product. The telephone service provider is required to notify you if such changes are planned.

If this product is equipped with a corded or cordless handset, it is hearing aid compatible.

If this product has memory dialing locations, you may choose to store emergency telephone numbers (e.g., police, fire, medical) in these locations. If you do store or test emergency numbers, please:

Remain on the line and briefly explain the reason for the call before hanging up.

Perform such activities in off-peak hours, such as early morning or late evening.

Industry Canada

This device complies with Industry Canada licence-exempt RSS standard(s).

Operation is subject to the following two conditions: (1) this device may not cause harmful interference, and (2) this device must accept any interference received, including interference that may cause undesired operation.

Privacy of communications may not be ensured

FCC logo

FCC logo

FCC logo

FCC logo

FCC logo

FCC logo

FCC logo

FCC logo

FCC logo

FCC logo

FCC logo

FCC logo

FCC logo

FCC logo

FCC logo

FCC logo

FCC logo

FCC logo

FCC logo

FCC logo

FCC logo

FCC logo

FCC logo

FCC logo

FCC logo

FCC logo

FCC logo

FCC logo

FCC logo

FCC logo

FCC logo

FCC logo

FCC logo

FCC logo

FCC logo

FCC logo

FCC logo

FCC logo

FCC logo

FCC logo

FCC logo

FCC logo

FCC logo

FCC logo

FCC logo

FCC logo

FCC logo

FCC logo

FCC logo

FCC logo

FCC logo

FCC logo

FCC logo

FCC logo

FCC logo

FCC logo

FCC logo

FCC logo

FCC logo

FCC logo

FCC logo

FCC logo

FCC logo

when using this telephone.

The term "IC:" before the certification/registration number only signifies that the Industry Canada technical specifications were met.

The Ringer Equivalence Number (REN) for this terminal equipment is 1.0. The REN is an indication of the maximum number of devices allowed to be connected to a telephone interface. The termination on an interface may consist of any combination of devices subject only to the requirement that the sum of the RENs of all the devices does not exceed five. This product meets the applicable Industry Canada technical specifications.

FCC logo

FCC logo

FCC logo

FCC logo

FCC logo

FCC logo

FCC logo

FCC logo

FCC logo

FCC logo

FCC logo

FCC logo

FCC logo

FCC logo

FCC logo

FCC logo

FCC logo

FCC logo

FCC logo

FCC logo

FCC logo

FCC logo

FCC logo

FCC logo

FCC logo

FCC logo

FCC logo

FCC logo

FCC logo

FCC logo

FCC logo

FCC logo

FCC logo

FCC logo

FCC logo

FCC logo

FCC logo

FCC logo

FCC logo

FCC logo

FCC logo

FCC logo

FCC logo

FCC logo

FCC logo

FCC logo

FCC logo

FCC logo

FCC logo

FCC logo

FCC logo

FCC logo

FCC logo

FCC logo

FCC logo

FCC logo

FCC logo

FCC logo

FCC logo

FCC logo

FCC logo

FCC logo

FCC logo

FCC logo

FCC logo

FCC logo

FCC logo

FCC logo

FCC logo

FCC logo

FCC logo

FCC logo

FCC logo

FCC logo

FCC logo

FCC logo

FCC logo

FCC logo

FCC logo

FCC logo

FCC logo

FCC logo

FCC logo

FCC logo

FCC logo

FCC logo

FCC logo

FCC logo

FCC logo

FCC logo

FCC logo

FCC logo

FCC logo

FCC logo

FCC logo

FCC logo

FCC logo

FCC logo

FCC logo

FCC logo

FCC logo

FCC logo

FCC logo

FCC logo

FCC logo

FCC logo

FCC logo

FCC logo

FCC logo

FCC logo

For C-UL compliance only

Mesures de sécurité importantes

Afin de réduire les risques d’incendie, de blessures corporelles ou d’électrocution, suivez toujours ces mesures préventives de base lorsque vous utilisez votre téléphone :

- Lisez et comprenez bien toutes les instructions.
- Observez toutes les instructions et mises en garde inscrites sur l'appareil.
- Débranchez ce téléphone de la prise murale avant de le nettoyer. N'utilisez pas de nettoyeurs liquides ni en aérosol. N'utilisez qu'un chiffon doux et légèrement humecté.
- N'utilisez pas ce produit près de l'eau, tel que près d'un bain, d'un lavabo, d'un évier de cuisine, d'un bac de lavage ou d'une piscine, ou dans un sous-sol humide ou sous la douche.
- Ne déposez pas ce téléphone sur un chariot, support ou table chancelants. L'appareil pourrait tomber et être sérieusement endommagé.
- Le boî